



# Sprayberry Office Park

## OFFERING SUMMARY

Property Details	
<b>Property Name:</b>	<b>Sprayberry Office Park</b>
<b>Address:</b>	2790 Sandy Plains Rd Marietta, GA
<b>Price Per SF:</b>	\$12.00/SF - NNN (Negotiable)
<b>Available Space:</b>	1,715 - 2,900 SF
<b>Zoning:</b>	Retail/Office built out for Medical
<b>Parking Spaces:</b>	5 per 1,000 SF
<b>Sandy plains (VPD):</b>	44,400 VPD
<b>Post Oak Tritt (VPD):</b>	14,300 VPD
<b>Points of Interest:</b>	Outstanding location next to new mixed-use development

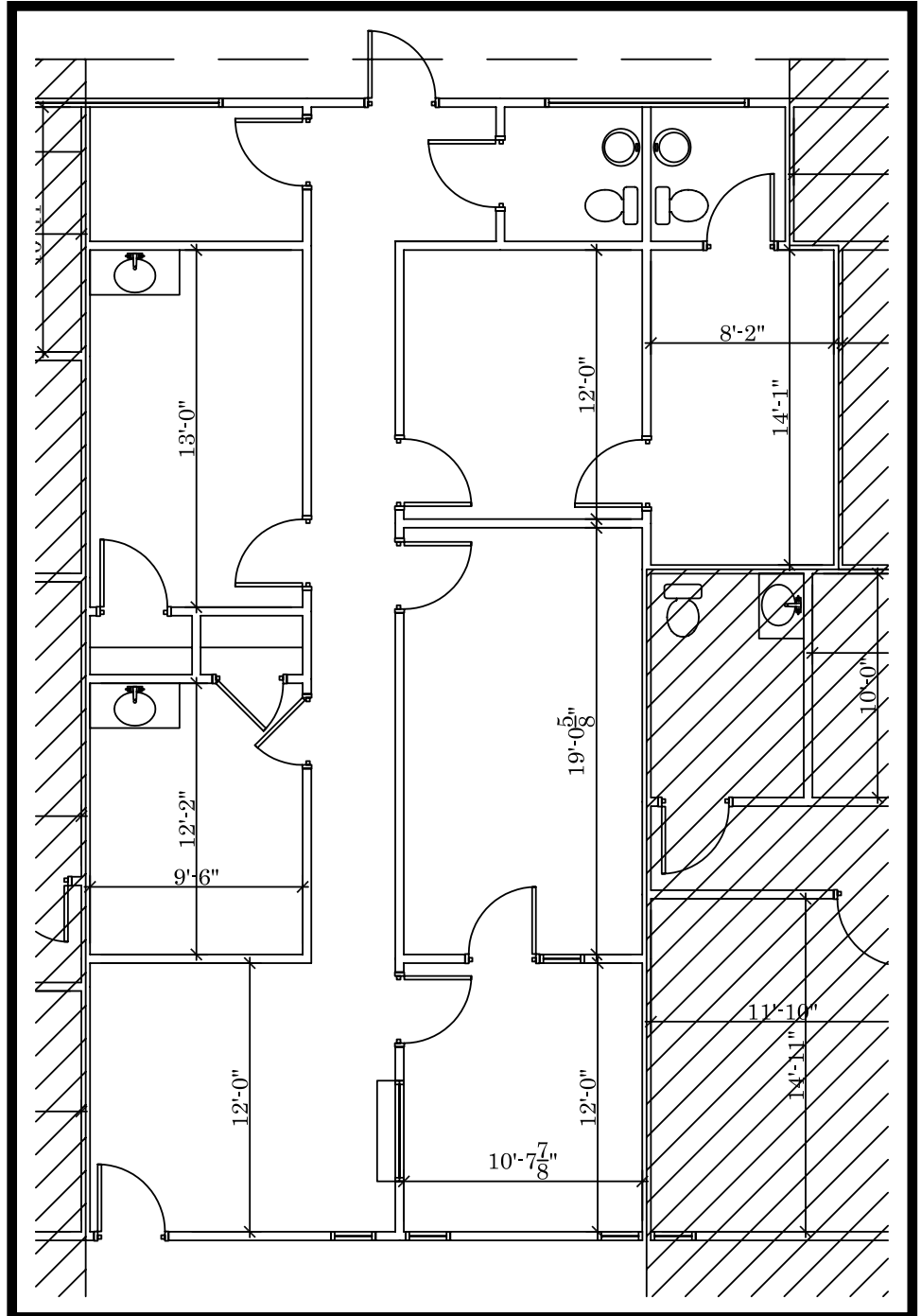
Demographics	1 Mile	3 Mile	5 Mile
<b>Population:</b>	8,111	<b>63,650</b>	173,259
<b>Households:</b>	3,059	<b>23,113</b>	65,214
<b>Median HHI:</b>	\$84,357	<b>\$86,553</b>	\$77,716
<b>Average HHI:</b>	\$105,168	<b>\$111,528</b>	\$104,276
<b>Employers:</b>	504	<b>2,959</b>	9,811

**THERESA JOHNSON**  
 Partner  
 tjohnson@dowdcre.com  
 770.329.9330



**THERESA JOHNSON**  
Partner  
tjohnson@dowdcre.com  
770.329.9330

SUITE 202



NOTE:  
THIS PLAN WAS DRAWN W/O THE BENEFIT OF AN ON SITE FIELD VERIFICATION. PRIOR TO CONSTRUCTION, FACILITEC, INC. RECOMMENDS THAT A VERIFICATION IS COMPLETED. IT WILL BE THE RESPONSIBILITY OF THE G.C. TO NOTIFY FACILITEC, INC. OF ANY PROBLEMS. FACILITEC, INC. SHALL NOT BE HELD RESPONSIBLE FOR FOR ANY CODE INFRACTIONS DUE TO THIS MATTER.

ANY FURNITURE OR EQUIPMENT SHOWN IS NIC AND ONLY SHOWN FOR PLANNING PURPOSES.

PRELIMINARY PLAN  
SHEET NO:  
**P-1**  
SHEET NO:

REV	DATE:	DISCRPTION:	DRAWN BY:
	09.08.11	AS-BUILT	MS
			JOB #: 11123
			RSF: 1,715

**SUITE 202**  
SPRAYBERRY OFFICE PARK  
2790 SANDY PLAINS ROAD  
MARIETTA, GA 30066

**FACILITEC**  
WORKING SPACES | CONTROLLED COSTS

SUITE 501  
260 PEACHTREE STREET  
ATLANTA, GA 30303  
(404) 816-6464

THIS DRAWING IS THE PROPERTY OF FACILITEC, INC. AND SHALL NOT BE REPRODUCED OR COPIED WITHOUT THE WRITTEN PERMISSION OF FACILITEC, INC.

©COPYRIGHT  
FACILITEC, INC.